

Capability Statement



Your premium prefabrication partner

Delivering solutions to meet and exceed your construction program.

We offer innovative services for the prefabrication of steel reinforcement for concrete structures.

Alpha Infrastructure was founded to fill the gap in the Victorian Infrastructure Market to prefabricate complex reinforcement cages. Since then, our portfolio of products and services has grown to prefabricating reinforcement cages, supply of BAMTEC carpets, project management services and storage solutions.

We help construction projects save time and money and deliver jobs more safely with better quality. We strive to develop solutions and work closely with Tier 1 construction companies, reinforcement suppliers, formwork contractors, and other partners with a goal of advancing the reinforcement industry.

Our Clients



13,000 m2 of exclusive real estate to deliver multiple complex and large infrastructure projects.



St Albans Facility

- 6,000 m2 under hook
- 1,000 m2 of storage
- 3 Gantry Cranes
- 24 tons lift capacity



Braybrook Facility

- 5,000 m2 under hook
- 1,000 m2 of storage
- 7 Gantry Cranes
- 14 tons lift capacity

We have successfully delivered more than 16 infrastructure projects, totalling 39,600 tonnes of prefabricated cages.

Diaphragm Walls – Lower Plenty Road

13,000 T of Diaphragm and Barrette Walls



GFRP Pile Cages – Watsonia Box

40m long GFRP cages for TBM Soft Eye



Diaphragm Walls – Parramatta Station, Sydney Metro

2,000 T of Diaphragm Walls



Cavern Arch Lining – Melbourne Metro

Prefabricated 5 elements with sacrificial structural steel to create free standing arch reinforcement



Pictureframes – Melbourne Metro

Junction of Cavern Arch Lining and Adit



Parkdale Level Crossing Removal Project

Prefabricated Crossheads and Columns for the elevated level crossing removal at Parkdale



RMG Beams – Somerton Intermodal Transport

4km of Rail Mounted Gantry Crane Beams



Chelsea, Bonbeach & Edithvale Level Crossing Removal Project

4 Level Crossing Removals and 3 New Stations



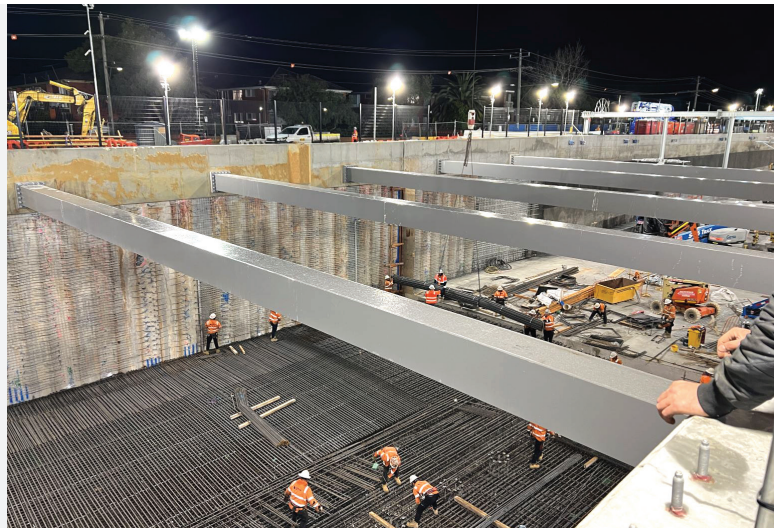
Union Road & Mt Albert Road Level Crossing Removal Project

1km long Tanking Slab with 3350 T of Bamtec



Glen Huntly Road & Neerim Road Level Crossing Removal Project

5600 T of Tanking Slab installed in 2 weeks with hybrid solution of Prefabricated Cages and Bamtec



Exclusive BAMTEC® supplier in Victoria



Most experienced and largest prefabrication workforce in Victoria



EV - Schedule_LX with BL FABRICATION OF COLUMNS AND CROSSHEADS FOR PARKADE LEVEL CROSSING REMOVAL - UPDATE
Date: 05 Feb 2024

Activity	Description	Activity Code	Start Date	End Date	Status
E1-FAB-0502	Storage/Delivery of Column - Pier 21	Completed	05/02/2024	11/02/2024	
E1-FAB-0503	Storage/Delivery of Column - Pier 24	Completed	05/02/2024	11/02/2024	
E1-FAB-0504	Storage/Delivery of Column - Pier 26	Completed	05/02/2024	11/02/2024	
E1-FAB-0505	Storage/Delivery of Column - Pier 34	Completed	05/02/2024	11/02/2024	
E1-FAB-0506	Storage/Delivery of Column - Pier 36	Completed	05/02/2024	11/02/2024	
E1-FAB-0507	Storage/Delivery of Column - Pier 38	In Progress	05/02/2024	11/02/2024	
E1-FAB-0508	Storage/Delivery of Column - Pier 39	Completed	05/02/2024	11/02/2024	
E1-FAB-0509	Storage/Delivery of Column - Pier 40	Completed	05/02/2024	11/02/2024	
E1-FAB-0510	Storage/Delivery of Column - Pier 14	Not Started	11/02/2024	25/02/2024	
E1-FAB-0511	Storage/Delivery of Column - Pier 12	Not Started	11/02/2024	25/02/2024	
E1-FAB-0512	Storage/Delivery of Column - Pier 10	Not Started	05/02/2024	11/02/2024	
E1-FAB-0513	Storage/Delivery of Column - Pier 28	Completed	05/02/2024	11/02/2024	
E1-FAB-0514	Storage/Delivery of Column - Pier 26	Completed	05/02/2024	11/02/2024	
E1-FAB-0515	Storage/Delivery of Column - Pier 24	Completed	05/02/2024	11/02/2024	
E1-FAB-0516	Storage/Delivery of Column - Pier 22	Completed	05/02/2024	11/02/2024	
E1-FAB-0517	Storage/Delivery of Column - Pier 20	Completed	05/02/2024	11/02/2024	
E1-FAB-0518	Storage/Delivery of Column - Pier 18	Completed	05/02/2024	11/02/2024	
E1-FAB-0519	Storage/Delivery of Column - Pier 16	Completed	05/02/2024	11/02/2024	
E1-FAB-0520	Storage/Delivery of Column - Pier 14	Completed	05/02/2024	11/02/2024	
E1-FAB-0521	Production of Crosshead - Pier 21	Completed	05/02/2024	11/02/2024	
E1-FAB-0522	Production of Crosshead - Pier 24	Completed	05/02/2024	11/02/2024	
E1-FAB-0523	Production of Crosshead - Pier 26	Completed	05/02/2024	11/02/2024	
E1-FAB-0524	Production of Crosshead - Pier 34	Completed	05/02/2024	11/02/2024	
E1-FAB-0525	Production of Crosshead - Pier 36	Completed	05/02/2024	11/02/2024	
E1-FAB-0526	Production of Crosshead - Pier 38	In Progress	05/02/2024	11/02/2024	
E1-FAB-0527	Production of Crosshead - Pier 39	Completed	05/02/2024	11/02/2024	
E1-FAB-0528	Production of Crosshead - Pier 40	Completed	05/02/2024	11/02/2024	
E1-FAB-0529	Production of Crosshead - Pier 14	Not Started	11/02/2024	25/02/2024	
E1-FAB-0530	Production of Crosshead - Pier 12	Not Started	11/02/2024	25/02/2024	
E1-FAB-0531	Production of Crosshead - Pier 10	Not Started	05/02/2024	11/02/2024	
E1-FAB-0532	Production of Crosshead - Pier 28	Completed	05/02/2024	11/02/2024	
E1-FAB-0533	Production of Crosshead - Pier 26	Completed	05/02/2024	11/02/2024	
E1-FAB-0534	Production of Crosshead - Pier 24	Completed	05/02/2024	11/02/2024	
E1-FAB-0535	Production of Crosshead - Pier 22	Completed	05/02/2024	11/02/2024	
E1-FAB-0536	Production of Crosshead - Pier 20	Completed	05/02/2024	11/02/2024	
E1-FAB-0537	Production of Crosshead - Pier 18	Completed	05/02/2024	11/02/2024	
E1-FAB-0538	Production of Crosshead - Pier 16	Completed	05/02/2024	11/02/2024	
E1-FAB-0539	Production of Crosshead - Pier 14	Completed	05/02/2024	11/02/2024	
E1-FAB-0540	Production of Crosshead - Pier 12	Completed	05/02/2024	11/02/2024	
E1-FAB-0541	Production of Crosshead - Pier 10	Completed	05/02/2024	11/02/2024	
E1-FAB-0542	Production of Crosshead - Pier 8	Completed	05/02/2024	11/02/2024	
E1-FAB-0543	Production of Crosshead - Pier 6	Completed	05/02/2024	11/02/2024	
E1-FAB-0544	Production of Crosshead - Pier 4	Completed	05/02/2024	11/02/2024	
E1-FAB-0545	Production of Crosshead - Pier 2	Completed	05/02/2024	11/02/2024	
E1-FAB-0546	Production of Crosshead - Pier 1	Completed	05/02/2024	11/02/2024	
E1-FAB-0547	Production of Crosshead - Pier 18	Completed	05/02/2024	11/02/2024	
E1-FAB-0548	Production of Crosshead - Pier 16	Completed	05/02/2024	11/02/2024	
E1-FAB-0549	Production of Crosshead - Pier 14	Completed	05/02/2024	11/02/2024	
E1-FAB-0550	Production of Crosshead - Pier 12	Completed	05/02/2024	11/02/2024	
E1-FAB-0551	Production of Crosshead - Pier 10	Completed	05/02/2024	11/02/2024	
E1-FAB-0552	Production of Crosshead - Pier 8	Completed	05/02/2024	11/02/2024	
E1-FAB-0553	Production of Crosshead - Pier 6	Completed	05/02/2024	11/02/2024	
E1-FAB-0554	Production of Crosshead - Pier 4	Completed	05/02/2024	11/02/2024	
E1-FAB-0555	Production of Crosshead - Pier 2	Completed	05/02/2024	11/02/2024	
E1-FAB-0556	Production of Crosshead - Pier 1	Completed	05/02/2024	11/02/2024	
E1-FAB-0557	Production of Crosshead - Pier 18	Completed	05/02/2024	11/02/2024	
E1-FAB-0558	Production of Crosshead - Pier 16	Completed	05/02/2024	11/02/2024	
E1-FAB-0559	Production of Crosshead - Pier 14	Completed	05/02/2024	11/02/2024	
E1-FAB-0560	Production of Crosshead - Pier 12	Completed	05/02/2024	11/02/2024	
E1-FAB-0561	Production of Crosshead - Pier 10	Completed	05/02/2024	11/02/2024	
E1-FAB-0562	Production of Crosshead - Pier 8	Completed	05/02/2024	11/02/2024	
E1-FAB-0563	Production of Crosshead - Pier 6	Completed	05/02/2024	11/02/2024	
E1-FAB-0564	Production of Crosshead - Pier 4	Completed	05/02/2024	11/02/2024	
E1-FAB-0565	Production of Crosshead - Pier 2	Completed	05/02/2024	11/02/2024	
E1-FAB-0566	Production of Crosshead - Pier 1	Completed	05/02/2024	11/02/2024	
E1-FAB-0567	Production of Crosshead - Pier 18	Completed	05/02/2024	11/02/2024	
E1-FAB-0568	Production of Crosshead - Pier 16	Completed	05/02/2024	11/02/2024	
E1-FAB-0569	Production of Crosshead - Pier 14	Completed	05/02/2024	11/02/2024	
E1-FAB-0570	Production of Crosshead - Pier 12	Completed	05/02/2024	11/02/2024	
E1-FAB-0571	Production of Crosshead - Pier 10	Completed	05/02/2024	11/02/2024	
E1-FAB-0572	Production of Crosshead - Pier 8	Completed	05/02/2024	11/02/2024	
E1-FAB-0573	Production of Crosshead - Pier 6	Completed	05/02/2024	11/02/2024	
E1-FAB-0574	Production of Crosshead - Pier 4	Completed	05/02/2024	11/02/2024	
E1-FAB-0575	Production of Crosshead - Pier 2	Completed	05/02/2024	11/02/2024	
E1-FAB-0576	Production of Crosshead - Pier 1	Completed	05/02/2024	11/02/2024	
E1-FAB-0577	Production of Crosshead - Pier 18	Completed	05/02/2024	11/02/2024	
E1-FAB-0578	Production of Crosshead - Pier 16	Completed	05/02/2024	11/02/2024	
E1-FAB-0579	Production of Crosshead - Pier 14	Completed	05/02/2024	11/02/2024	
E1-FAB-0580	Production of Crosshead - Pier 12	Completed	05/02/2024	11/02/2024	
E1-FAB-0581	Production of Crosshead - Pier 10	Completed	05/02/2024	11/02/2024	
E1-FAB-0582	Production of Crosshead - Pier 8	Completed	05/02/2024	11/02/2024	
E1-FAB-0583	Production of Crosshead - Pier 6	Completed	05/02/2024	11/02/2024	
E1-FAB-0584	Production of Crosshead - Pier 4	Completed	05/02/2024	11/02/2024	
E1-FAB-0585	Production of Crosshead - Pier 2	Completed	05/02/2024	11/02/2024	
E1-FAB-0586	Production of Crosshead - Pier 1	Completed	05/02/2024	11/02/2024	
E1-FAB-0587	Production of Crosshead - Pier 18	Completed	05/02/2024	11/02/2024	
E1-FAB-0588	Production of Crosshead - Pier 16	Completed	05/02/2024	11/02/2024	
E1-FAB-0589	Production of Crosshead - Pier 14	Completed	05/02/2024	11/02/2024	
E1-FAB-0590	Production of Crosshead - Pier 12	Completed	05/02/2024	11/02/2024	
E1-FAB-0591	Production of Crosshead - Pier 10	Completed	05/02/2024	11/02/2024	
E1-FAB-0592	Production of Crosshead - Pier 8	Completed	05/02/2024	11/02/2024	
E1-FAB-0593	Production of Crosshead - Pier 6	Completed	05/02/2024	11/02/2024	
E1-FAB-0594	Production of Crosshead - Pier 4	Completed	05/02/2024	11/02/2024	
E1-FAB-0595	Production of Crosshead - Pier 2	Completed	05/02/2024	11/02/2024	
E1-FAB-0596	Production of Crosshead - Pier 1	Completed	05/02/2024	11/02/2024	
E1-FAB-0597	Production of Crosshead - Pier 18	Completed	05/02/2024	11/02/2024	
E1-FAB-0598	Production of Crosshead - Pier 16	Completed	05/02/2024	11/02/2024	
E1-FAB-0599	Production of Crosshead - Pier 14	Completed	05/02/2024	11/02/2024	
E1-FAB-0600	Production of Crosshead - Pier 12	Completed	05/02/2024	11/02/2024	

All projects are planned and delivered using Primavera P6

Our Safety

We never compromise on safety. We don't prioritise safety, we value it. Because priority is something that changes, and values can't. Everybody that works with us has the right to go home safely. There is nothing more important. To achieve our commitment to safety, we promise:

- Put safety first, always;
- Show commitment to safety in everything we do;
- Make safety personal, always.

